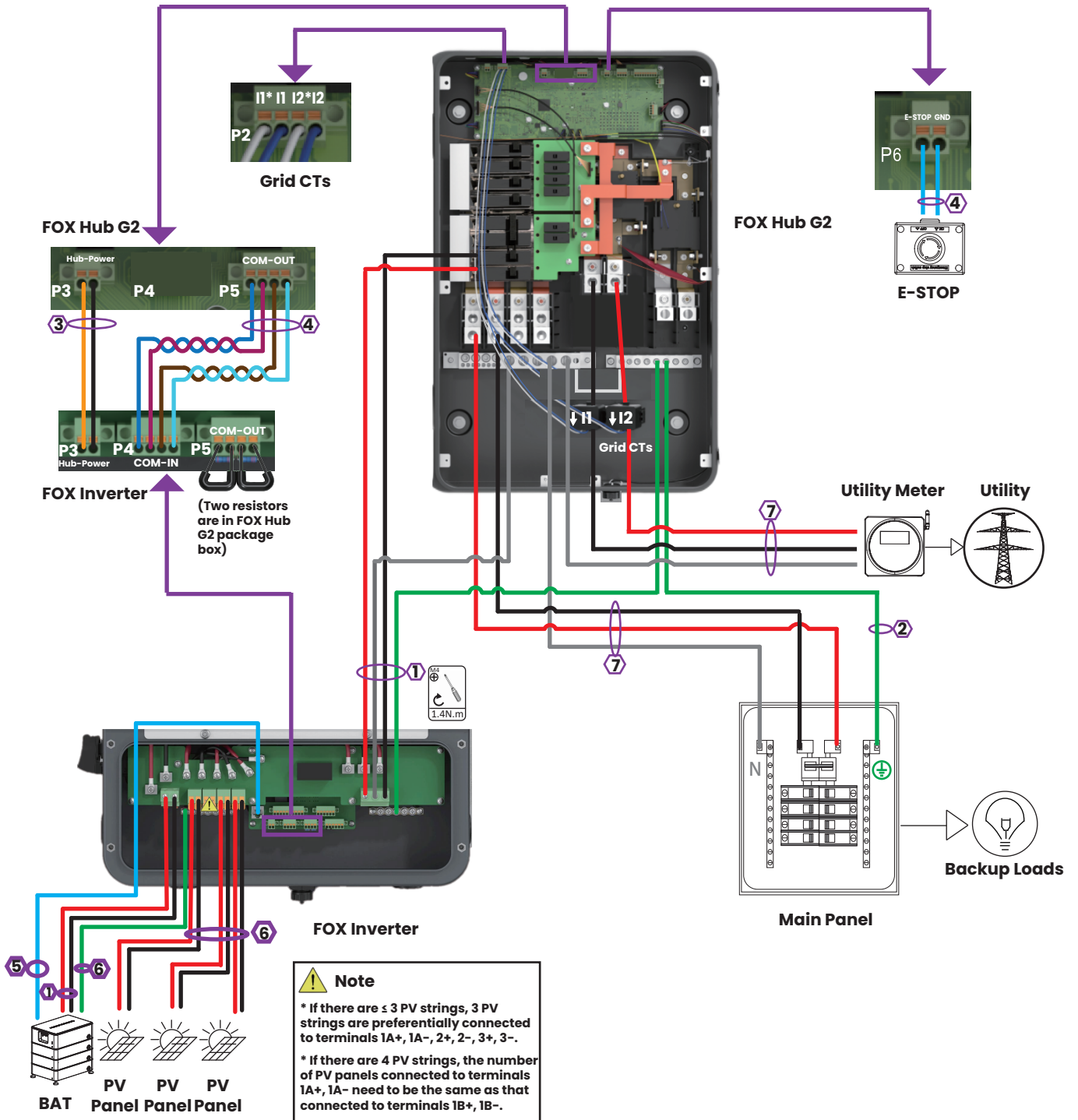


Fox ESS Three-line Diagram (FOX Hub G2+Single Inverter)

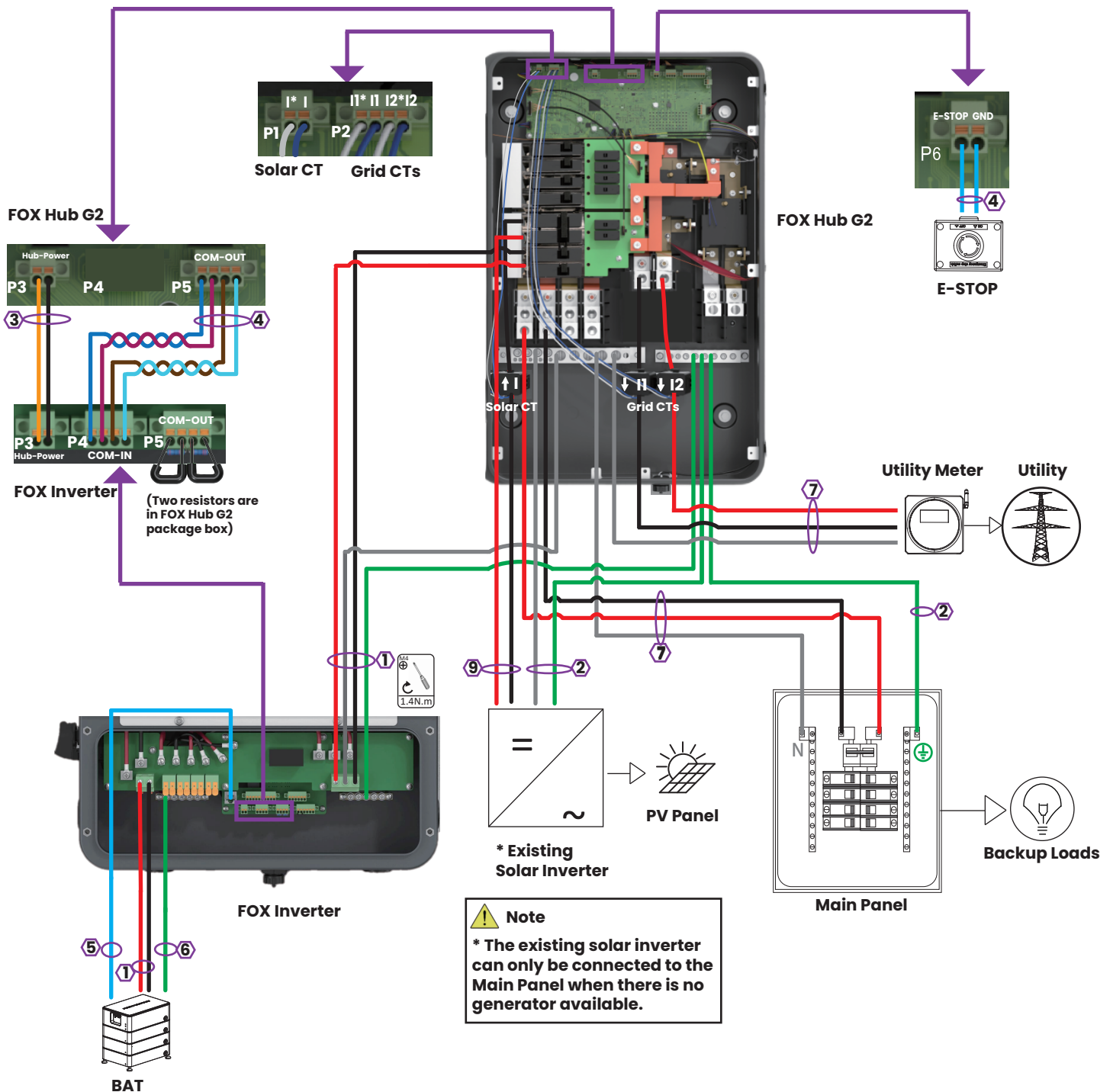
Whole-home Backup (DC Couple)



Wire Gauge Guide(copper)		
Label	Input Terminal	Conductor
1	BAT/AC IN/OUT/N/GND	6 AWG
2	AC IN/OUT/N/GND	6-2/0 AWG
3	Power	16 AWG
4	Signal Cable	24-16 AWG
5	Communication Cable	Ethernet Cable
6	MPPT/GND	10 AWG
7	AC IN/OUT/N	6AWG-250 kcmil
8	AC IN/OUT/N	6-4/0 AWG
9	AC IN/OUT	6-1/0 AWG

Fox ESS Three-line Diagram (FOX Hub G2+Single Inverter)

Whole-home Backup (AC Couple)



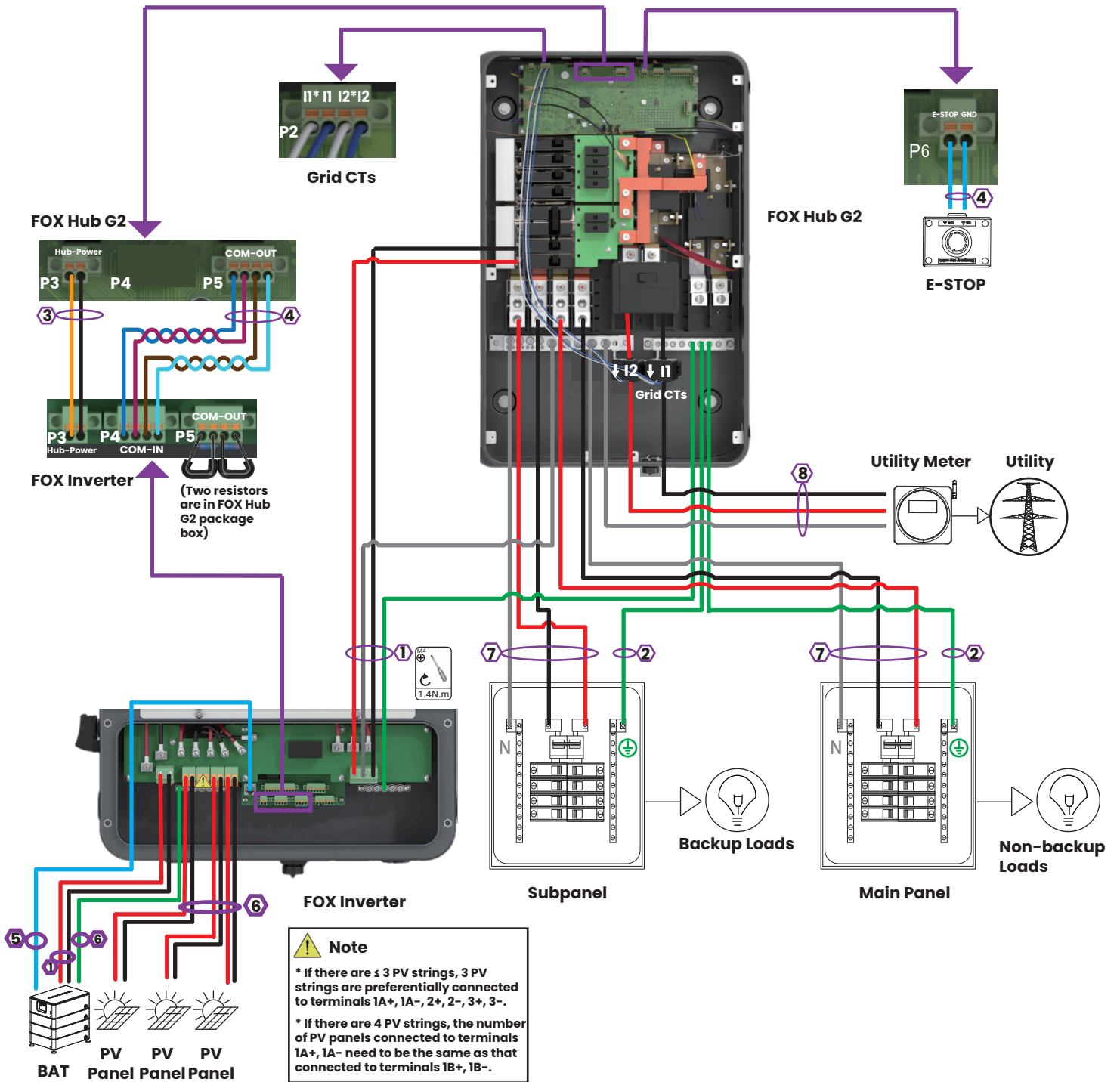
Key

- L1/Negative
- L2/Positive
- Ground
- Neutral
- Other Colors: Sensors/Communications

Wire Gauge Guide(copper)		
Label	Input Terminal	Conductor
1	BAT/AC IN/OUT/N/GND	6 AWG
2	AC IN/OUT/N/GND	6-2/0 AWG
3	Power	16 AWG
4	Signal Cable	24-16 AWG
5	Communication Cable	Ethernet Cable
6	MPPT/GND	10 AWG
7	AC IN/OUT/N	6AWG-250 kcmil
8	AC IN/OUT/N	6-4/0 AWG
9	AC IN/OUT	6-1/0 AWG

Fox ESS Three-line Diagram (FOX Hub G2+Single Inverter)

Partial-home Backup (DC Couple) (FOX Hub G2 as Service Panel)



Wire Gauge Guide(copper)		
Label	Input Terminal	Conductor
1	BAT/AC IN/OUT/N/GND	6 AWG
2	AC IN/OUT/N/GND	6-2/0 AWG
3	Power	16 AWG
4	Signal Cable	24-16 AWG
5	Communication Cable	Ethernet Cable
6	MPPT/GND	10 AWG
7	AC IN/OUT/N	6AWG-250 kcmil
8	AC IN/OUT/N	6-4/0 AWG
9	AC IN/OUT	6-1/0 AWG

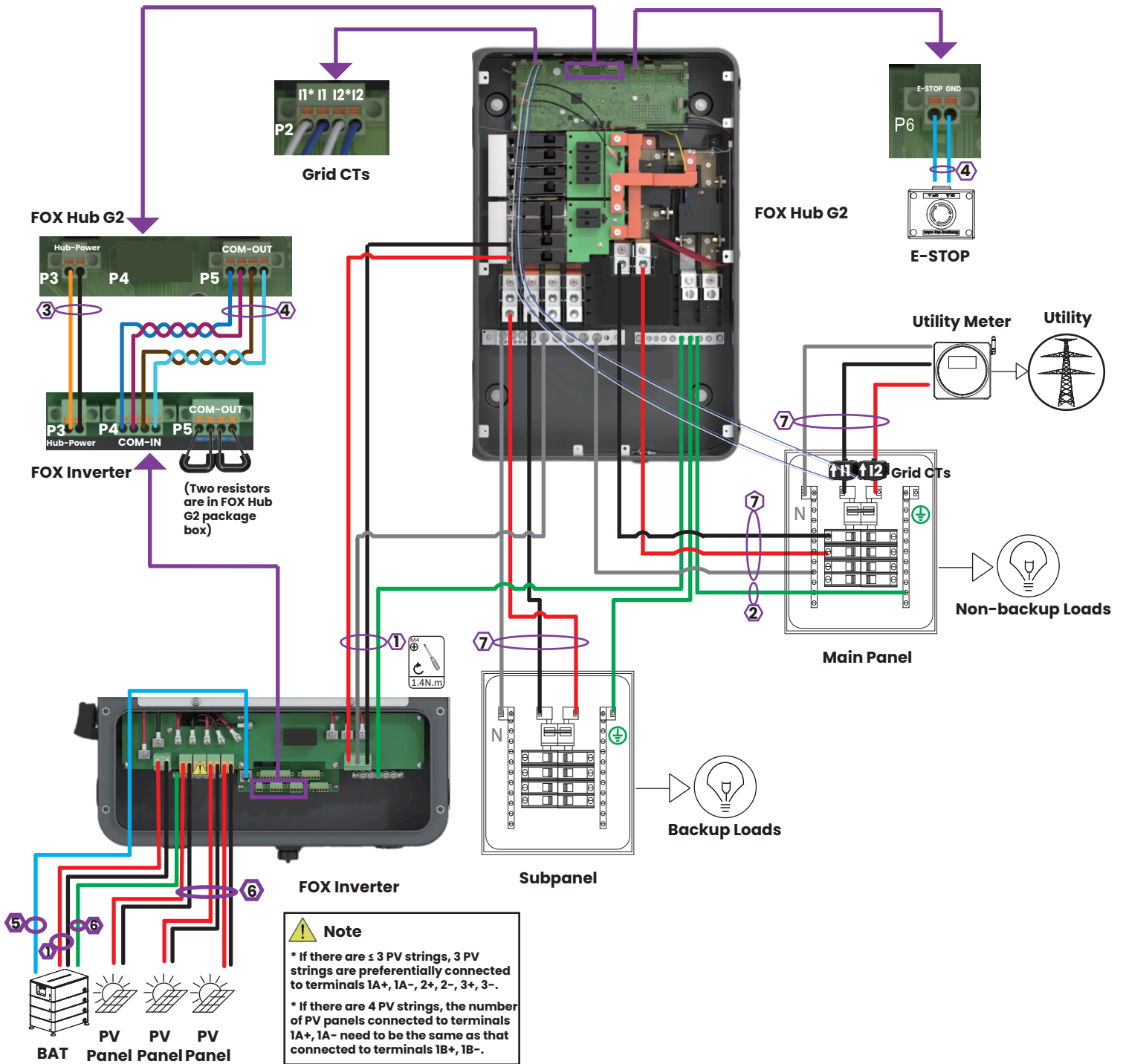
Key

- L1/Negative
- L2/Positive
- Ground
- Neutral

Other Colors: Sensors/Communications

Fox ESS Three-line Diagram (FOX Hub G2+Single Inverter)

Partial-home Backup (DC Couple) (FOX Hub G2 not as Service Panel)



Wire Gauge Guide(copper)		
Label	Input Terminal	Conductor
1	BAT/AC IN/OUT/N/GND	6 AWG
2	AC IN/OUT/N/GND	6-2/0 AWG
3	Power	16 AWG
4	Signal Cable	24-16 AWG
5	Communication Cable	Ethernet Cable
6	MPPT/GND	10 AWG
7	AC IN/OUT/N	6AWG-250 kcmil
8	AC IN/OUT/N	6-4/0 AWG
9	AC IN/OUT	6-1/0 AWG

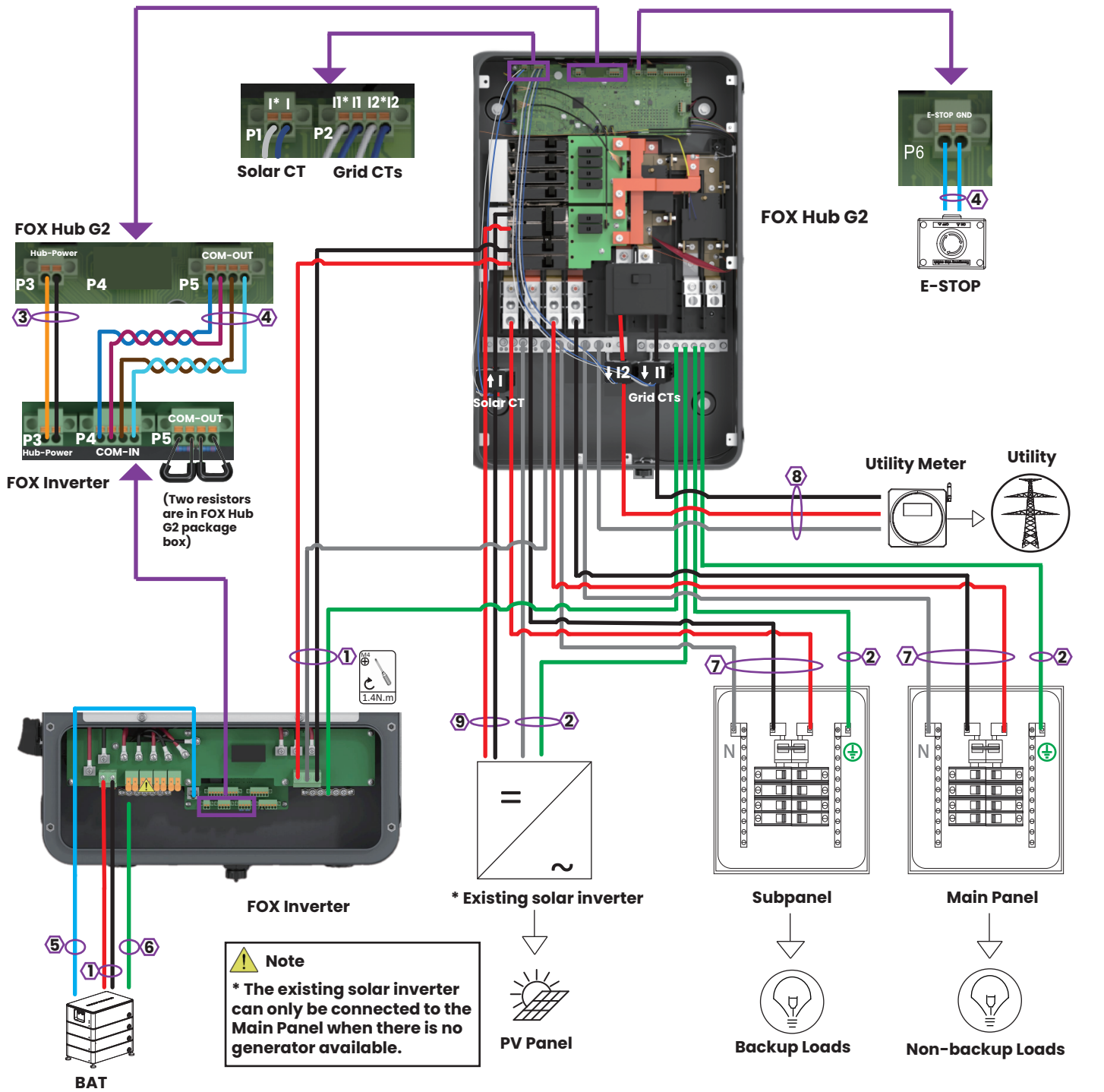
Key

- L1/Negative
- L2/Positive
- Ground
- Neutral

Other Colors: Sensors/Communications

Fox ESS Three-line Diagram (FOX Hub G2+Single Inverter)

Partial-home Backup (AC Couple) (FOX Hub G2 as Service Panel)



Wire Gauge Guide(copper)		
Label	Input Terminal	Conductor
1	BAT/AC IN/OUT/N/GND	6 AWG
2	AC IN/OUT/N/GND	6-2/0 AWG
3	Power	16 AWG
4	Signal Cable	24-16 AWG
5	Communication Cable	Ethernet Cable
6	MPPT/GND	10 AWG
7	AC IN/OUT/N	6AWG-250 kcmil
8	AC IN/OUT/N	6-4/0 AWG
9	AC IN/OUT	6-1/0 AWG

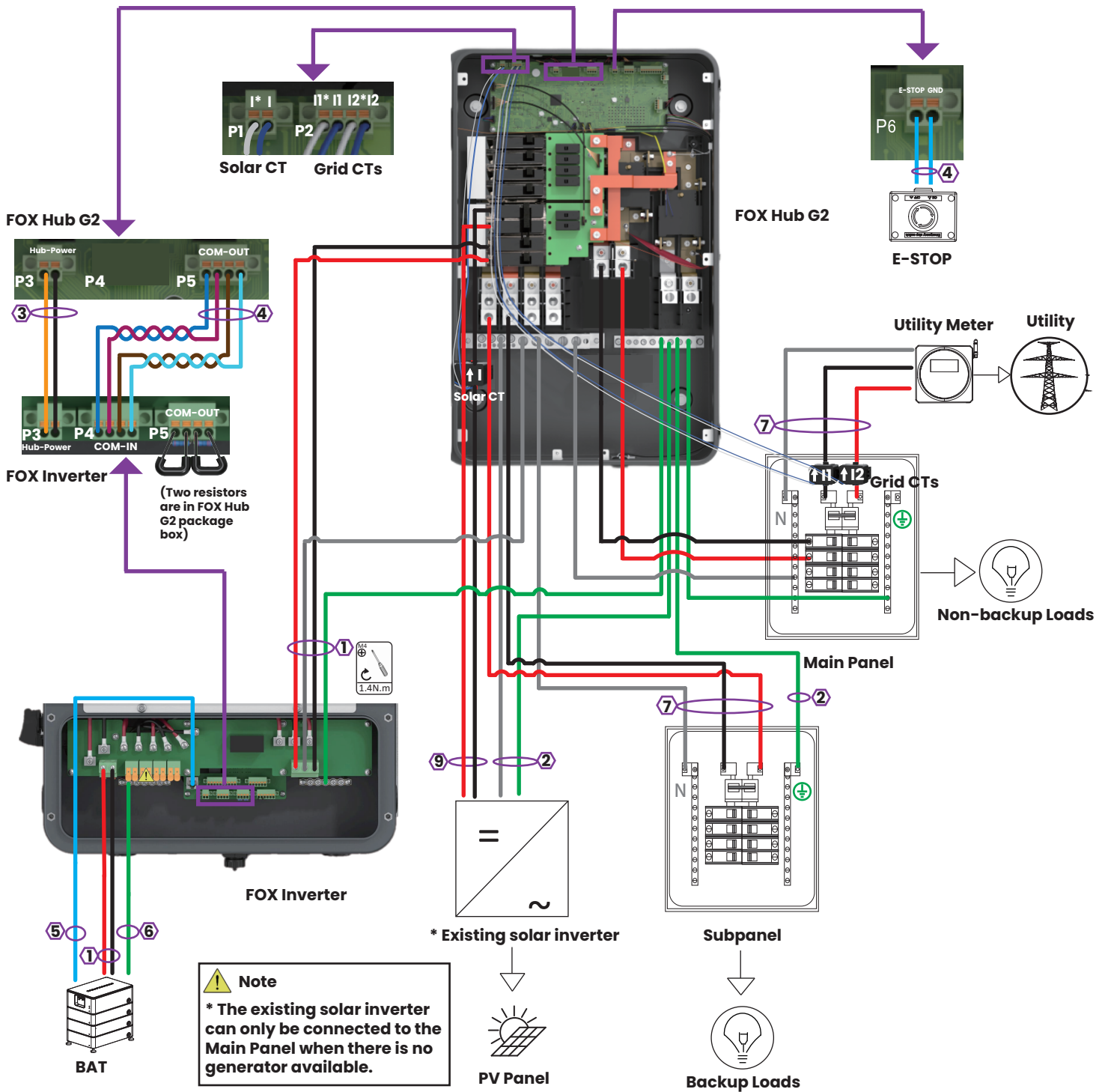
Key

- L1/Negative
- L2/Positive
- Ground
- Neutral

Other Colors: Sensors/Communications

Fox ESS Three-line Diagram (FOX Hub G2+Single Inverter)

Partial-home Backup (AC Couple) (FOX Hub G2 not as Service Panel)



Wire Gauge Guide(copper)		
Label	Input Terminal	Conductor
1	BAT/AC IN/OUT/N/GND	6 AWG
2	AC IN/OUT/N/GND	6-2/0 AWG
3	Power	16 AWG
4	Signal Cable	24-16 AWG
5	Communication Cable	Ethernet Cable
6	MPPT/GND	10 AWG
7	AC IN/OUT/N	6AWG-250 kcmil
8	AC IN/OUT/N	6-4/0 AWG
9	AC IN/OUT	6-1/0 AWG

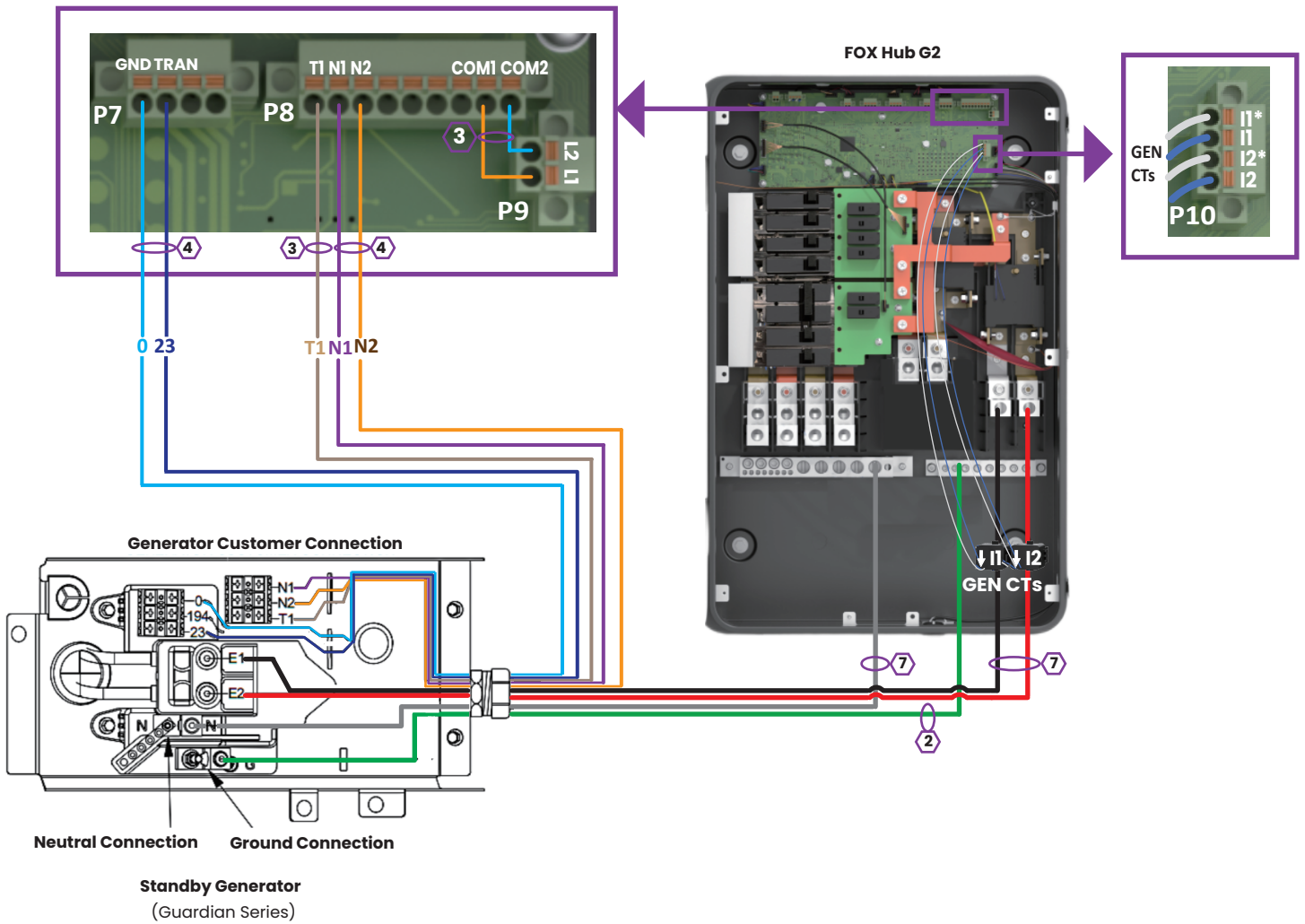
Key

- L1/Negative
- L2/Positive
- Ground
- Neutral

Other Colors: Sensors/Communications

Fox ESS Three-line Diagram (FOX Hub G2+Single Inverter)

Generator Wiring (Optional)



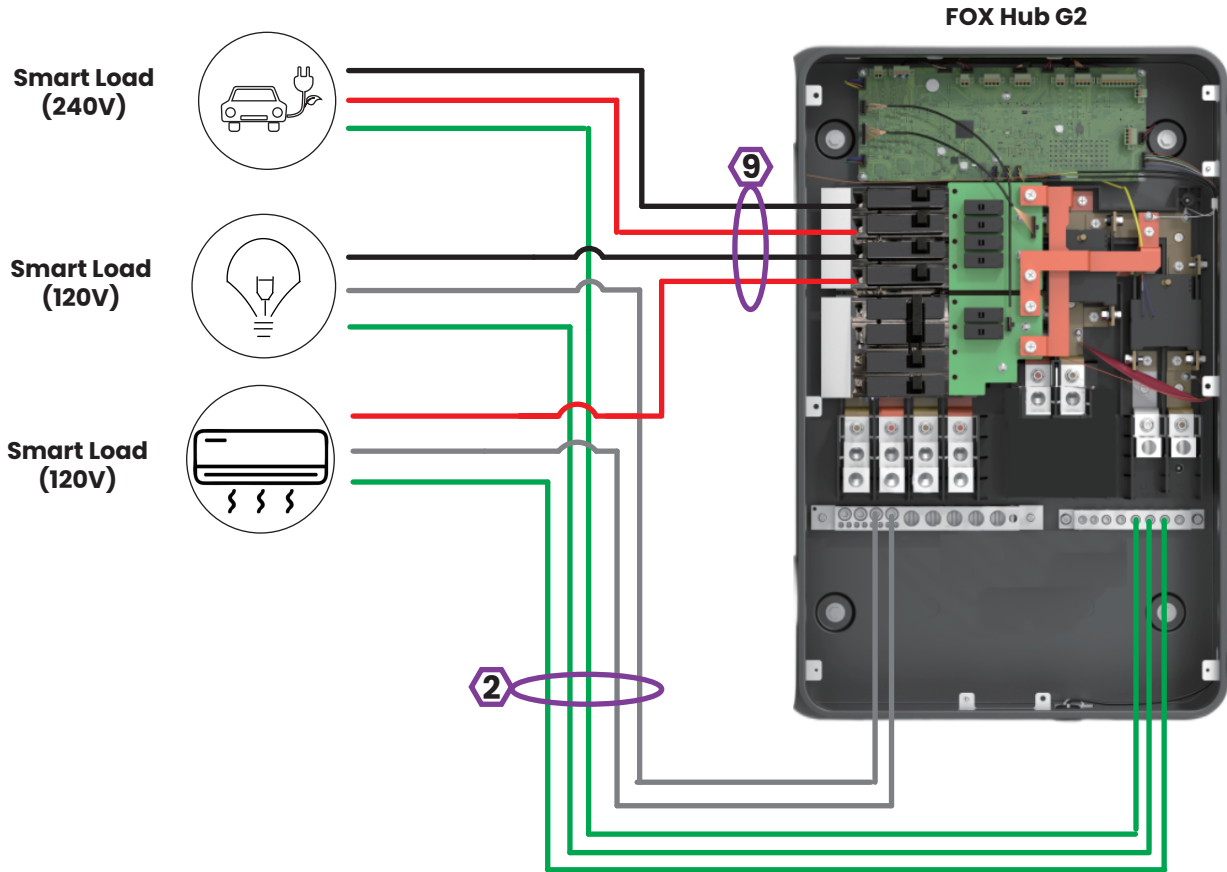
⚠ Note
 If the generator is connected to the hub, the system needs to include batteries.

Key	
●	L1/Negative
●	L2/Positive
●	Ground
●	Neutral
Other Colors: Sensors/Communications	

Wire Gauge Guide(copper)		
Label	Input Terminal	Conductor
1	BAT/AC IN/OUT/N/GND	6 AWG
2	AC IN/OUT/N/GND	6-2/0 AWG
3	Power	16 AWG
4	Signal Cable	24-16 AWG
5	Communication Cable	Ethernet Cable
6	MPPT	10 AWG
7	AC IN/OUT/N	6AWG-250 kcmil
8	AC IN/OUT/N	6-4/0 AWG
9	AC IN/OUT	6-1/0 AWG

Fox ESS Three-line Diagram (FOX Hub G2+Single Inverter)

Smart Loads Wiring (Optional)



Key

- L1/Negative
- L2/Positive
- Ground
- Neutral

Other Colors: Sensors/
Communications

Wire Gauge Guide(copper)		
Label	Input Terminal	Conductor
1	BAT/AC IN/OUT/N/GND	6 AWG
2	AC IN/OUT/N/GND	6-2/0 AWG
3	Power	16 AWG
4	Signal Cable	24-16 AWG
5	Communication Cable	Ethernet Cable
6	MPPT	10 AWG
7	AC IN/OUT/N	6AWG-250 kcmil
8	AC IN/OUT/N	6-4/0 AWG
9	AC IN/OUT	6-1/0 AWG